


Shavings



Providing an environment that fosters the art and craft of woodturning

February 2013



John Jordon Demo

*Important Information Inside
Saturday, April 27 all day presentation
April 28 & 29 hands on demo*

Events Calendar

Next Month Meeting:
March 17, 2013
2:00 PM to 4:00 PM

March 's Meeting:
Greg Smith
Demonstrating Turning
Bud Vases

2013

John Jordon Demo
Saturday, April 27, 2013
Details to Follow

The "**Detroit Area Woodturners**" (DAW) is a local chapter of the **American Association of Woodturners (AAW)**. The AAW is an international, not-for-profit organization dedicated to the advancement of the woodturning craft. Our mission is to provide information, education, a meeting place, and an effective organization for all who are interested in turning wood.



<http://www.woodturner.org/>

A Publication of;

DETROIT AREA



WOODTURNERS

<http://www.detroitarea-woodturners.com/>

Board Members

President:	Russell Holmes
1st Vice	Chuck Lobaito
President:	
2nd Vice	Dennis Montville
President:	
Treasurer:	Philip Stevens
Secretary:	Roger LaRose

Committee Members

Asset Manager:	Alfred Schembri
Audio:	Sam Failla
Librarian:	Gary Clay
Member Chair:	Greg Smith
Mentor Program:	Ray Frase
Newsletter:	Roger Meeker
Photography:	Jack Parmenter
Raffle:	Joy Lobaito
Resale chair:	Ron Black
Video:	Paul Neuburger
Web Site:	Gary Clay

CONTENTS

Upcoming Events	Page 3
Meeting notes	Page 4
Demonstrator	Page 5
Show & Tell	Page 6
Faces in the Crowd	Page 10
Tool Tips	Page 12
Shop Visits	Page 15
Wood of the month	Page 18

In The News

John Jordon Hollow Form Demonstration

John is recognized as one of the premier woodturners in the world. Known primarily for his textured and carved hollow vessels, John will be demonstrating hollow turning, carved and textured surfaces, properties of wood, tool sharpening, and turning techniques. This is truly a must see presentation.

The Saturday presentation will be an all day demo at Shadbrush and will include lunch, all for \$35.

The hands-on demonstrations are limited to 6 DAW members, and will be held at Ray Frase's, all for \$135.

Please complete the attached form and return at the March meeting.

March Meeting

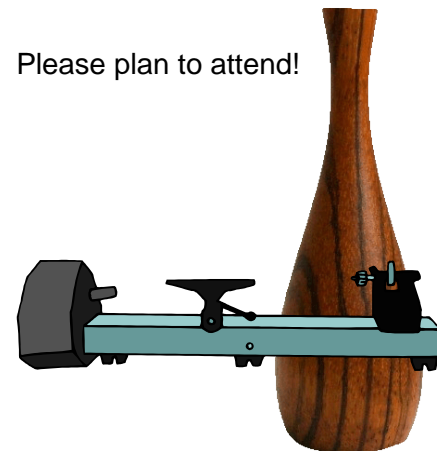
Our March meeting is scheduled for March 17, 2013 at 2:00 PM.

March will feature Greg Smith as our presenter.



He will be demonstrating turning bud vases. Greg's demos are always very informative and detailed.

Please plan to attend!



Upcoming Events

Upcoming Events

The President's Corner

DAW March meeting

Sunday, March 17, 2013 at 2:00 PM

DAW April meeting

Sunday, April 21, 2013 at 2:00 PM

John Jordon Seminar

Saturday, April 27 - All day demonstration
Shadbush Nature Center

Sunday, April 28 - Hands on workshop
Ray Frase's studio

Monday, April 29 - Hands on workshop
Ray Frase's studio

DAW May meeting

Sunday, May 19, 2013 at 2:00 PM

DAW June meeting "Turnathon"

Sunday, June 2, 2013 at 12:00 PM

DAW "Tool Swap"

Sunday, June 2, 2013 - 1 hour prior to Turnathon

AAW 2013 Symposium - Tampa

June 28 - 30, 2013

Festival of the Senses

Saturday, Sept. 21, 10:00am-5:00pm

Sunday, Sept. 22, 10:00am-5:00pm

Ohio Valley Woodturner Guild Symposium

October 11-13, 2013

Update

Turning Around America
"Sharing mobile arts education to and for the community."



The Detroit Area Woodturners received a thank you letter from the people at "Turning Around America", thanking all of the members for their support, with regards to our donation. Since receiving the letter, we've been told that the money required to move forward has been reached and the project will continue as planned.

I just wanted to thank all of our members for being part of a club (Detroit Area Woodturners) that supports the growth of woodturning.

Ross Holmes
President

Special Thanks!

I'd like to give a special thanks to all of the members who assist in setting up for the meeting and also for breaking down after the meeting. It's truly an important part in the equation for a successful demonstration and meeting.

Often times, everyone's moving so fast that I don't get a chance to say thank you, your assistance is truly appreciated.

Ross Holmes
President



DAW Meeting, February 17, 2013

Sunday, February 17, 2013



Russ Holmes opens the meeting with a warm welcome to everyone in attendance and also

welcomes several visitors. Russ took a moment to welcome our new members and asked them to introduce themselves.

DAW Scholarship

Russ once again reminded everyone of the DAW scholarship fund and since most educational programs take place in the spring and summer, response to the issuing of a scholarship will take place by the March meeting. This will require all applications to be received by the February meeting or mailed to an officer by the end of February. And remember, this educational scholarship is for up to \$550. Please see our website for a PDF copy of the DAW scholarship application. [Click for a copy](#)

Treasurer's Report

Philip Stevens, our treasurer explained that the DAW has ordered generic business cards to help promote new memberships. All current members are welcome to 5 or 10 business cards to hand out whenever they notice someone's interest in woodturning. In addition to the business cards Phil explained a new logo program. A **spreadsheet is attached (Page 20) to order** hats, mugs, pens, and even mouse pads with the Detroit Area Woodturners logo applied. **Please bring your order to the March meeting along with payment.**



John Jordon Seminar

Russ explained the DAW plans



**Important
Please Read!**

for the April John Jordon presentation.

The plan is to have a full day presentation by John Jordon on Saturday, April

27, including lunch. The cost of this one-day event will be \$35. This presentation/demonstration will be held at The Shadbush Nature Center.

Sunday, April 28 and Monday, April 29 will be an all day hands-on workshop hosted in Ray Frase's studio in Waterford. There will be a restriction of 6 woodturners per day, to accommodate John Jordan's expertise and to accommodate physical space requirements. The cost of this one-day workshop will be \$135. This will allow only 12 woodturners in total, a form is attached this newsletter and a drawing will be held (if necessary) at the March meeting.

**Please see attached sign-up sheet!
Page 19**

Raffle

We have another successful raffle with the help of

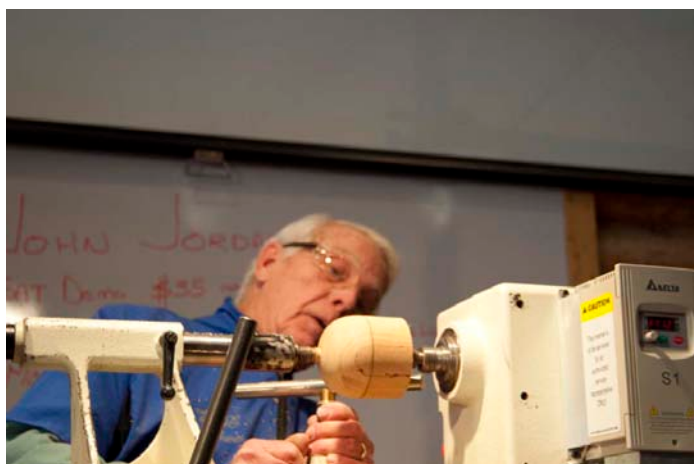


Bella and Joy Lobaito. Also, thank you to all of those who donated items to be raffle.

Turning Spheres with Bob Daily

Our demonstration on turning spheres by Bob Daily was informative and enjoyable to watch. Bob talked about sizing the block of wood, marking the dimensions on the cylinder, and the steps in turning the cylinder into an oblong sphere. At that point Bob discussed the jam chucks and how to fine tune them for each and every sphere. He then explained how the centerline becomes a pivot point for returning the sphere until the shadows disappear. Bob also brought several samples of spheres that he sells at art fairs.

We have a 23 min. video of Bob turning spheres. Please click on the link or paste it into your web browser. <http://youtu.be/RqVMhu7KXS0>



To view a 23 min. video of Bob Daily's demonstration on turning spheres
Click on the link below or copy this link into your web browser

<http://youtu.be/RqVMhu7KXS0>

"Show & Tell"



Alfred Schembri



Jack Parmenter



Paul Neuberger



Steve Rohr



"Show & Tell" (cont'd)



Jim Scarsella



Dennis Nagle



Sam Failla



Ken Kiernicki



"Show & Tell" (cont'd)



Philip Stevens



Ray Frase



Ron Sztumerski



Gary Clay

"Show & Tell" (cont'd)



Russ Layle

Jeff Walters image not available!

Sorry, problems with the memory card, I could not retrieve the image.

No images available

Sorry Jeff!

Jeff Walters

Henry Martin image not available!

Sorry, problems with the memory card, I could not retrieve the image.



Henry Martin



Roger Meeker "One Arm"

Russ Holmes wants you for breakfast



There is a breakfast get together Every Tuesday Morning at 8:00am, held at the **Avenue Restaurant** on Woodward Ave at 13 Mile Rd.

All are welcome.



Faces in the Crowd



Pre-Meeting Set Up



DAW Photographer
Jack Parmenter



Pre-Meeting Set Up



Faces in the Crowd

DAW Photographer
Jack Parmenter



Shop Talk and Tool Tips

Orange Peel Eliminator for Lacquer Finishes

by WoodturningVideosPlus.com by Steven D. Russell

Submitted by Alfred Schembri



Small projects like these can be finished very easily with a spray finish.

Overview: Lacquer is a very popular finish for woodturnings and I use it frequently in my studio for various projects. It is quite easy to use and virtually foolproof most of the time. It can be sprayed, brushed, or wiped-on (depending on product and viscosity), making it easy to use no matter what type of project you're working on at the moment. Cured lacquer offers good durability, although it's not as durable as some of the more labor intensive finishes like multi-coat oils, polyurethanes, cyanoacrylates, or epoxies. One of the great features of this finish is the ability to apply numerous coats in a relatively short period of time. Various tints and pigments can be easily added to produce tone sprays, colored topcoats, or metallic finishes. It also polishes to a brilliant, glossy luster that begs to be touched. In short, it is a very versatile finish that's a dependable and predictable performer.

Applying Lacquer

Most of the lacquer I use in my studio is sprayed using HVLP equipment, airbrushes, Preval sprayers (small disposable sprayers), or by using it from a regular aerosol can. I also brush it on from time to time, but spraying it is by far my favorite way to apply this finish. On larger projects I prefer using my HVLP equipment, but when you just want to finish a small project like a writing pen or a bottle stopper, using an HVLP rig is overkill. In situations like these, I typically use an aerosol spray finish, like Master's Magic.

Master's Magic is my favorite spray finish for small projects.

Aerosols are easy to use and store, although they are far from *ideal*. Many aerosols have spray tips that seem to have been made for applying a textured or sputtered finish. Some tips are so bad, that they lay down a finish that looks like the surface of a cobblestone street... Master's Magic makes a great high build spray lacquer and the 50 degree spray tip is much better than you'll find on most spray lacquers. When I want to spray this finish from a can, Master's Magic is my finish of choice.



Orange Peel Rears Its Ugly Head

However, any aerosol spray finish can leave a bit of orange peel on the surface that must be smoothed to create that glossy smooth surface that we all love so much. While you can easily wet sand any orange peel on the surface of the finish, it requires extra time and labor. *Note: Orange peel is defined as a pebbled like surface on lacquer or enamel finishes that resembles an orange skin. Orange peel can be caused by the finish drying too rapidly when sprayed, or by a failure or combination of failures to achieve the desired leveling effects.*

Years ago, when I was doing a lot of projects for the retail market, I stumbled upon a technique to eliminate much, if not all of the wet sanding I was doing on my lacquer finished projects. I say stumbled upon, because I did not set out to develop this shortcut, I accidentally discovered it one day when working on a rush project. Like so many things in life, necessity became the mother of invention when I found a great way to eliminate virtually all of the wet sanding I had been doing on my finishes prior to buffing.

Orange Peel Eliminator

I was in the studio one day working on a signature piece for a big show and I had just finished spraying the last coat of lacquer when I got a phone call. I stepped out of the studio to answer the phone and whilst I was talking, a wasp flew in the studio and managed to land on the finish I had just applied to the project. Lucky me!

When I returned to the studio, the little bugger was still flopping about in a death roll, as it tried to free itself from the sticky surface. After carefully removing the wasp with a pair of tweezers, I surveyed the damage to the finish. I had applied about seven coats of finish at this point and there was no time to strip it off and start over. There was also no time to spray more on and let it harden enough to wet sand and buff out. I had barely enough time left to allow the finish to harden, so I could buff it.

As I pondered my situation, I considered dropping this piece from the show entirely and moving on to the rest of the work that needed to be done to get ready to leave. However, this piece was a real eye catcher and I needed it as a visual hook for the booth. With no time to apply several more coats, I thought why not spray lacquer thinner on the surface and let it smooth out the damaged area?

Disposable Preval sprayers are an excellent way to spray lacquer thinner on finished lacquer surfaces.

If this plan worked, I would not lose much time and I could come back in a few minutes and wet sand the surface to prepare it for buffing. With nothing to lose, I poured some lacquer thinner into a Preval sprayer and donned my respirator (which was outfitted with an organic vapor cartridge), as I grabbed my finishing turntable. I applied several light misting coats onto the surface as I slowly rotated the project to insure an even application of the thinner on the surface.

Success

Ka-Ching! Not only did the area damaged by the wasp smooth out entirely, but I also noticed that all of the light orange peel on the rest of the surface was also eliminated. This meant that I no longer needed to wet sand the project at all, saving me even more time. After shooting the surface with inert gas to set the finish, I let it sit on my finishing turntable to dry. Later that night I completed buffing the project and packaged it for the show. As expected the piece was a great eye catcher in our booth and it really helped to make our show a success. The buyer loved it as well and I left the show a very happy camper. On the way home from the show, I recalled the effect the lacquer thinner had on the lightly orange peeled surface. If it worked for light orange peel, it would probably work for heavy orange peel, like you sometimes get with spray lacquers. I did not have long to wait, as I completed a series of smaller projects the next week for another show. All of these projects were sprayed with Master's Magic and all had varying degrees of orange peel on the surface.



This thinner is much less expensive to purchase in one or five gallon sizes.

Rather than wet sanding them, I tried my orange peel eliminator shortcut and every single project responded beautifully. Any existing orange peel on the surface was eliminated and the finish was smooth as glass, ready for buffing. That was more than ten years ago and I have been using this little shortcut ever since... It will not only save you time and effort, but I have found it eliminates virtually every bit of wet sanding I need to do on finished projects prior to buffing.



Other Benefits

In addition to removing varying degrees of orange peel on the surface of sprayed lacquer, I have found this technique beneficial for many other tasks. These include 1) Smoothing out buildup between tightly spaced design elements, like a series of small beads, 2) Blending and smoothing out multiple coats of tone-spray, 3) Allows easy feathering and blending of different colors for fade-in, fade-out effects, and 4) It's great for softening the surface of the finish to apply atomized metallic dusts into specific areas before over-coating with clear lacquer.



Make sure you wear a respirator with organic vapor cartridges when spraying these finishes or solvents.

There are still a few times when I resort to wet sanding a finished project prior to buffing, but it is a rare case indeed these days. For 99% of my lacquer finishes, this shortcut does the trick, very well indeed. Give it a try on your next project and see for yourself! Remember to wear a respirator (dust masks will do nothing to protect your lungs from toxic fumes) with the proper organic vapor cartridge installed anytime you spray finishes, solvents, or thinners. In addition, remember to wear any other safety equipment that may be required. Safety First!

Safety Note: Always follow all manufacturers safety instructions before working with your lathe, or any of the tools or products you may use. If you are unsure about any operation, obtain competent professional instruction before proceeding. Use and wear all necessary safety devices during turning and observe safe woodturning practices to prevent accident or injury.



Shop Visits

A Pictorial Trip to a DAW Member's Workshop

Our fourth trip is to the shop of Philip Stevens

By Roger Meeker

Photography by
Jack Parmenter

Phil Stevens and his wife Barb have been married for 29 years. They have 2 children, a daughter who is 23 years old and will be getting married this May, their son is 21 years old and a junior at the University of Dayton. Phil is a partner at CKGP/PW & Associates, an engineering / consulting firm, primarily focused on the automotive industry.

Now for the more important stuff, Phil has been involved in woodworking and metalworking since he was 14 years old. Most of this time his focus is been on flat work.

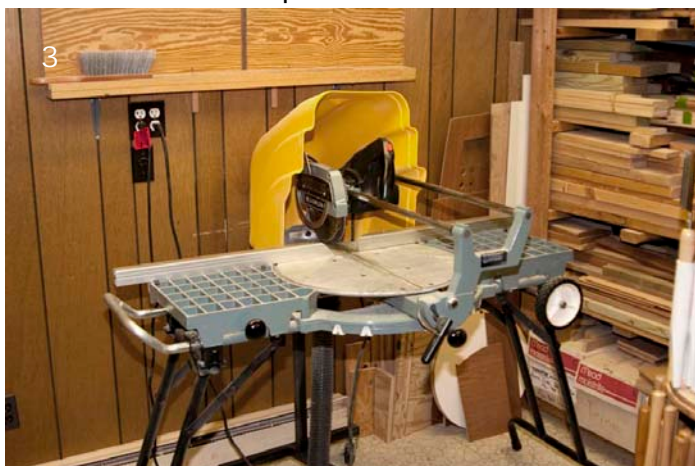
I believe it was about 1985 when Phil purchased his 1st Shopsmith. I personally have never owned a



Shopsmith and never knew the extent of the accessories available for a Shopsmith. So the evening I visited Phil's shop I learned more about the history of Shopsmith and the vast array of accessories available. Very interesting and really functional as an all-in-one woodworking machine. It's also necessary to explain that Phil has every accessory and upgrade Shopsmith ever produced.

He currently has 2 complete Shopsmiths assembled and working. He told me that he's purchased up to 9 Shopsmiths on the Internet to complete all the accessories and add-ons he needed, then sold most of the extra Shopsmiths and accessories.

Like most of us, he pretty much has his shop broken into work areas. After seeing numerous shops I came to realize that most of us organize our shops that way to accommodate the purchase of more tools.



His miter box saw can accommodate a 17 inch crosscut, I was very jealous. He does have this set up next to his wood rack.

Directly in front of the miter box saw and adjacent to



his Shopsmith you'll see his wood turning tools organizing rack.

At the opposite end of his workshop you will notice a cabinet table saw. The dust collection system is by Shopsmith. Beneath the top of the table saw Phil has built a cabinet storage system, each section of the system can accommodate different sized accessories.



At the far right side of the table saw top is a built-in router table.

On the other side of the wall which holds the wood rack as shown in "#4" are two smaller rooms which

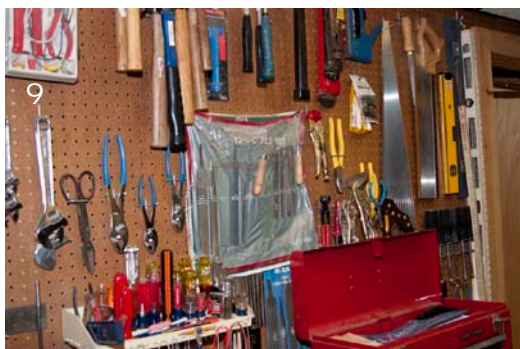


house a sanding and carving station. Phil has built a downdraft table for the work area. The next room



contains a drafting table, a planning desk and a collection of shop notes and Shopsmith notebooks.

Photo "#9" shows an assortment of basic tools used throughout the shop to maintain the equipment.

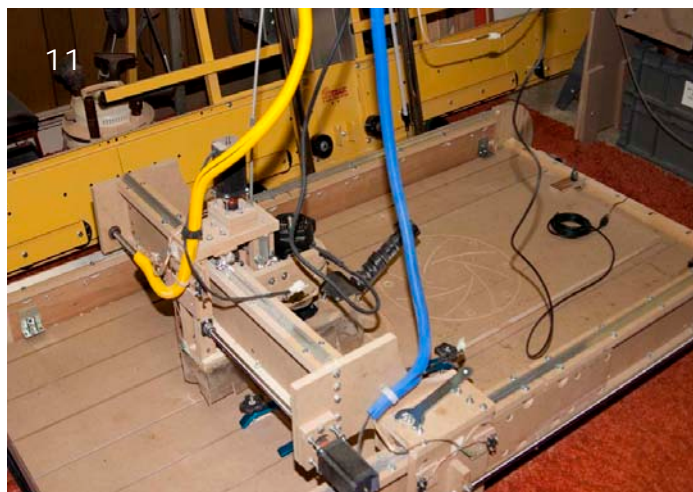


And in this photo "#10", you will see a panel saw, a tool which would be nice to have for flat work.



In regards to true wood turning, Phil has only been turning for just over one year. From the samples

Phil has brought to our show and tell, you are able to see a combination of very nice wood turning and a little bit of CNC. Phil told me that some time ago he set a personal goal to become more of a woodturner, he has actually worked at that goal and is becoming better and better.



In photo "#11" you can see one of Phil's to CNC machines.

Photo "#12" shows the monitor attached to the

computer and then on to the controller board, for the purpose of driving the CNC operation.

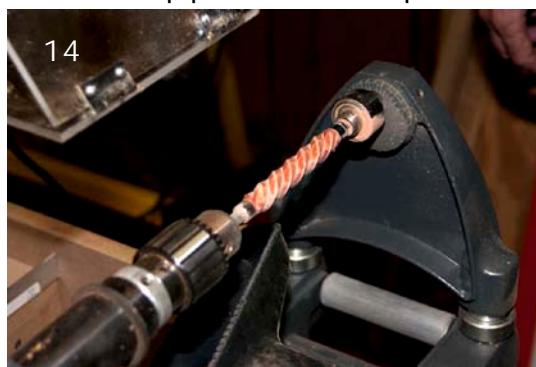


Photo "#13" is a separate CNC attached to a Shopsmith lathe, operated by the same controller board.

It doesn't take long before you realize that Phil is an engineer at heart.



This close-up photo "#14" is a piece of tulip wood milled on the CNC lathe setup.



Phil maintains a very organized and structured workshop area. He's a testament to DAW ingenuity!

To see a video of the milling operation in photo "#14" click on the link below or copy it to your web browser.

<http://youtu.be/TdKoAGXGzq4>

Watch for the next installment of "**Shop Visits**"!

Wood of the Month - Wild Cherry



Common Name(s): Wild Cherry, European Cherry
Scientific Name: Prunus avium
Distribution: Europe and Asia
Tree Size: 32-65 ft (10-20 m) tall, 1-2 ft (.3-.6 m) trunk diameter
Average Dried Weight: 39 lbs/ft³ (620 kg/m³)
Specific Gravity (Basic, 12% MC): .48, .62
Janka Hardness: 1,150 lbf (5,120 N)
Modulus of Rupture: 14,980 lbf/in² (103.3 MPa)
Elastic Modulus: 1,529,000 lbf/in² (10.55 GPa)
Crushing Strength: 7,250 lbf/in² (50.0 MPa)
Shrinkage:
 Radial: 5.1%
 Tangential: 8.4%
 Volumetric: 13.5%
 T/R Ratio: 1.6

Color/Appearance: Heartwood is a light pinkish brown when freshly cut, darkening to a deeper golden brown with time and upon exposure to light. Sapwood is a pale yellowish color, typically 1-2" wide.

Grain/Texture: Has a fine to medium texture with close grain. The grain is usually straight or slightly wavy.

Endgrain: Semi-ring-porous; small pores in no specific arrangement; solitary and radial multiples of 2-3; gum/deposits occasionally present; growth rings distinct due to a concentration of earlywood pores; rays visible without lens; parenchyma absent.

Rot Resistance: Heartwood is rated as being moderately durable to non-durable regarding decay resistance. Wild Cherry is also susceptible to insect attack.

Workability: Wild Cherry is easy to work with both machine and hand tools. The only difficulties typically arise if the wood is being stained, as it can sometimes give blotchy results due to its fine, close grain. A sanding sealer or gel stain is recommended. Glues, turns, and finishes well.

Allergies/Toxicity: Although there have been no adverse health effects reported for Wild Cherry, the closely related Black Cherry has been reported to cause respiratory effects. See the articles Wood Allergies and Toxicity and Wood Dust Safety for more information.

Pricing/Availability: Typically only available in Europe, Wild Cherry is usually only sold in smaller sizes or as veneer. Prices should be moderate within the tree's natural distribution.

Sustainability: This wood species is not listed in the CITES Appendices or on the IUCN Red List of Threatened Species.

Common Uses: Veneer, furniture, cabinetry, turned objects, musical instruments, and carvings.

Comments: Wild Cherry is the Old World counterpart to Black Cherry found in the New World. Wild Cherry is said to exhibit a bit more of a color contrast than Black Cherry, and it also tends to be slightly denser and stronger. However, the tree itself tends to be smaller than Prunus serotina, and does not yield the larger sizes of lumber that are available for the American species.

Scans/Pictures:

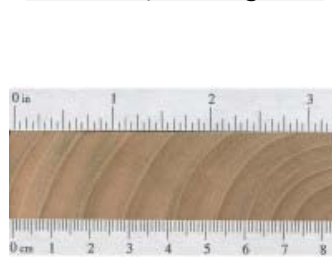
Wild Cherry (sanded)



Wild Cherry (sealed)



Wild Cherry (endgrain)



Wild Cherry (curly)



John Jordon Sign Up Form

- Saturday, April 27, 2013 **\$35**
One-day event, presentation/demonstration
The Shadbush Nature Center
Includes lunch
- Sunday, April 28, 2013 * **\$135**
One-day hands-on workshop
Ray Frase's studio in Waterford
Includes lunch
- Monday, April 29, 2013 * **\$135**
One-day hands-on workshop
Ray Frase's studio in Waterford
Includes lunch

* Restriction of 6 woodturners per day
A drawing will be held (if necessary) at the March meeting

John Jordon Sign Up Form

Name: _____

Phone number: _____

Email: _____

Saturday, April 27, 2013 **\$35**

Sunday, April 28, 2013 **\$135**

Monday, April 29, 2013 **\$135**

Check:

Total: \$ _____

Cash:

This form must be returned by the March Meeting for drawing (if necessary)

DAW Logo Merchandise
Order Form

	Mugs	Tote Large	Tote Small	Mouse Pad Thin	Mouse Pad Thick	Pen	Hat White Printed	Hat Khaki Printed	Hat White Sticked	Hat Khaki Sticked	Number of Items	Total Cost	Paid	Email Address
Price	\$15	\$17	\$14	\$9	\$12	\$6	\$16	\$16	\$17	\$17				
John Doe <i>(Example)</i>			1						2		3	\$48	✓	jdoh@aol.com
												\$0		

Links - Suppliers

★ **Hartville Tool**

<http://www.hartvilletool.com>

800-345-2396

Woodturning Supplies

Craft Supply

<http://www.woodturnerscatalog.com>

800-551-8876

Woodturning Supplies

Packard

<http://www.packardwoodworks.com>

800-683-8876

Woodturning Supplies

★ **Klingspor**

<http://www.woodworkingshop.com>

800-228-0000

Abrasives and woodturning supplies

2Sand.com

<http://www.2Sand.com>

877-644-7445

Sanding Supplies

★ **Choice Woods**

<http://www.choice-woods.com>

888-895-7779 or 502-637-1190

Wood, Turning Stock, supplies

New



When ordering be sure to inform the store of your Detroit Area Woodturners membership
(Discounts may apply - usually 10% or Club Credit)

★ **Landfill Lumber**

www.landfilllumber.com

586-563-0441

Victor Lewandowski - Wood, Turning Stock

Richard Lauwers

810-724-2263

Kiln dried oak and maple

★ **Rockler**

<http://www.rockler.com>

800-279-4441

Woodworking and Hardware

Woodcraft

<http://www.woodcraft.com>

800-225-1153

Woodworking and Hardware

The Sanding Glove

<http://www.thesandingglove.com>

800-995-9328

Sanding Supplies

Log 2 Lumber - Chuck Lobaito

www.log2lumber.com

248-535-5035

log2lumber@gmail.com

Portable Saw Mill

Links - Woodturning Information

AAW - National Organization

[American Association of Woodturners](http://www.americanassociationofwoodturners.com)

Detroit Area Woodturners (Shelby Twp, MI)

Web Site: <http://www.detroitareawoodturners.com/>

Grand River Woodturners Guild (Grand Rapids, MI)

Web Site: <http://www.grandriverwoodturners.org>

Arrowmont School of Arts and Crafts

Web Site: <http://www.arrowmont.org/>

John C. Campbell Folk School

Web Site: <http://www.folkschool.org>

Al Stirt: Woodturner, Artist and Teacher

Web Site: <http://www.alstirt.com>

Michigan Association of Woodturners (Holly, MI)

Web Site: <http://www.michiganwoodturner.org>

Blue Water Area Woodturners (Richmond, MI)

Web Site: <http://www.bluewaterareawoodturner.org>

Ohio Valley Woodturners Guild (Cincinnati, OH)

Web Site: <http://www.ovwg.org>

Marc Adams School of Woodworking

Web Site: <http://www.marcadams.com/>

Woodcraft of Sterling Heights (586) 268-1919

Web Site: <http://www.woodcraft.com>

John Jordan Woodturner

Web Site: <http://www.johnjordanwoodturning.com>

Need Your Help

From the Editor

Articles are due at the monthly meeting (for example submit at or before the October meeting for the October Newsletter) and should be submitted to Roger Meeker at rmeeker26@gmail.com .

Member Projects

If you have a woodturning project that you would like to showcase to our club members, you can send me detailed information about your project with pictures.

Articles on New Woodturning Techniques and Tools

If you come across an article, wish to write an article on a new wood turning technique, care to write a review or want to forward on review of a new wood turning tool, please feel free to do so. Any photos will be helpful.

Shop Talk

Everyone has a different way of doing things in their shop and everyone's shop is different in many ways; whether it's size, location, or physical layout you are probably doing something that would be helpful for others to see.

Members Questions & Answers

Members are asked to submit woodturning, finishing and tool questions to our resident experts to answer. There are no dumb questions, someone else in the club may have had the same questions.

Classified Ads

Ads for woodturning and woodworking related items are free to members. Send detailed information with pictures.

Wood to Turn

Do you have wood, need wood or know about wood that is available for turning? Let me know and I'll pass it along

From the Editor, Again

Let's make this newsletter something interesting, if you send it, we'll publish it.

Footnote

If possible, please send a digital file (I don't type very well). Thank you!