



# Shavings



Providing an environment that fosters the art and craft of woodturning

October 2013

October 2013



Russ Holmes presents a walnut bowl to Lauren James of Shadbush Nature Center. This bowl was turned by all of the Detroit Area Woodturners members at the June Turn-a-thon



## Events Calendar

Next Month Meeting:  
**October 20, 2013**  
**1:30 PM to 4:00 PM**

October 's Meeting:  
**Jim Scarsella will demonstrate lidded boxes**

2013  
**Shelby Twp. Fall Festival**  
**September 14 & 15, 2013**

**Festival of the Senses**  
**September 21 & 22, 2013**

The "**Detroit Area Woodturners**" (DAW) is a local chapter of the **American Association of Woodturners (AAW)**. The AAW is an international, not-for-profit organization dedicated to the advancement of the woodturning craft. Our mission is to provide information, education, a meeting place, and an effective organization for all who are interested in turning wood.



<http://www.woodturner.org/>

A Publication of;

DETROIT AREA



WOODTURNERS

<http://www.detroitareawoodturners.com/>

Newsletter Editor:  
**Roger Meeker**

## Board Members

President: Russell Holmes  
 1st Vice: Chuck Lobaito  
 President: Dennis Montville  
 2nd Vice: Dennis Montville  
 President: Philip Stevens  
 Treasurer: Philip Stevens  
 Secretary: Roger LaRose

## Committee Members

Asset Manager: Alfred Schembri  
 Librarian: Gary Clay  
 Member Chair: Greg Smith  
 Mentor Program: Ray Frase  
 Newsletter: Roger Meeker  
 Photography: Jack Parmenter  
 Raffle: Joy Lobaito  
 Resale chair: Ron Black  
 Video: Paul Neuburger  
 Web Site: Roger Meeker

## CONTENTS

Upcoming Events Page 3  
 Meeting notes Page 4  
 Demonstrator Page 5  
 President's Challenge Page 6  
 Instant Gallery Page 10  
 Shop Visits Page 15  
 Wood of the Month Page 15  
 An American Tradition Page 16

## In The News

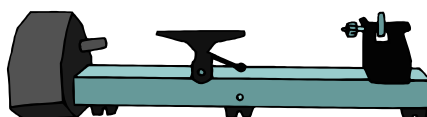
### Presidents Challenge

Every month there will be a Presidents Challenge. Everyone that enters will be in a drawing to win a prize for that month. Ideally,

Month	Project
October	Train Wessel
November	Lidded Box
December	No challenge, due to holiday party
January	Birdhouse Ornament

the challenge project will be something relating to the prior month's demonstration.

Keep on turning!



### November Meeting

Our November meeting is scheduled for November 17, 2013 at 1:30 PM.

The demonstrator for this meeting will be **Alfred**



**Schembri.** He will be demonstrating tips and techniques for turning a birdhouse ornaments.

Please plan to attend!

**Tell us what you would like to see this coming season.**

## Upcoming Events

### Upcoming Events

#### **DAW November meeting**

Sunday, November 17, at 1:30 PM  
Birdhouse Ornaments/Alfred Schembri

#### **Nick Cook**

Demonstrating for the Bluewater Area Woodturners  
November 19, 2013  
Contact the Bluewater Area Woodturners directly  
for more information  
<http://www.bluewaterareawoodturners.org/>

#### **DAW December meeting**

Sunday, December 22, at 1:30 PM  
Club Challenge/Gift Exchange/Holiday Party

#### **DAW January meeting**

Sunday, January 19, at 1:30 PM

#### **Tennessee Association of Woodturners Symposium**

January 31, 2014 and February 1, 2014  
Featuring; Doug Fisher, Trent Bosch, Barbara Dill,  
and Kurt Hertzog.  
<http://tnwoodturners.org/symposium/>

#### **Al Stirt**

Demonstrating for the Detroit Area Woodturners  
April 5,6, & 7, 2014  
More to follow

#### **AAW's 28th International Symposium in Phoenix AZ June 13-15, 2014**

<http://woodturner.org/sym/sym2014/>

## The President's Corner

### Nominations and Elections

It's that time of the year again, when we nominate our DAW board members/officers at the November general meeting and conduct our election at the December general meeting. It's also a great time to thank all of those who assist (committee chairpersons) in making our club a better place.

Russ Holmes  
President

### Changes, They Are a Coming!

A few of our committee chairpersons are changing positions; Roger Meeker will remain in charge of the website, but is handing off the role of Newsletter Editor to Craig Drozd. Jim Scarsella will be taking over the role of Membership Chairperson at the end of this year from Greg Smith. Greg has been involved with the DAW since its very beginning, he's had many roles and has worn many hats over the years, so let's all take a moment and say thank you Greg for your participation.

Russ Holmes  
President

### A Special "Thank You"

A very big "thank you" to all the members that



participate in manning our booth both Saturday and Sunday at the Shelby Twp. Fall Festival and at the Festival of the Senses. It's very important for our club to participate in these community

affairs, it's one of the ways we grow our membership and also keep ourselves grounded.

**Thanks for your participation!**


Russ Holmes  
President

## DAW Meeting, October 27, 2013

Sunday, October 27, 2013



Russ Holmes opens the meeting with a warm welcome to everyone in attendance.

- Russ explained the Decembers Turning Contest. Russ sold the blanks during our break. There are still blocks available! See handout Russ supplied.
- Russ presented a bowl to Shadbrush. Lauren James accepted the gift on behalf of the Shadbrush Nature Center.
 
- Russ discussed the two scholarships available to AAW members through their local chapters. The club can nominate up to two club members. Anyone interested must submit their request to the club president before November 6th. The club will review the applications and pick two during the November 6th board meeting. <http://www.woodturner.org/>
- The AAW also has educational grant opportunities available to AAW members. Apply directly to the AAW. Forms and guidelines are available at the AAW website; <http://www.woodturner.org/community/pop/grant.htm>

- A group has been put together to review the chapter bylaws. Any updates will be presented at the January meeting for membership approval.
- Woodcraft has part time openings. Anyone interested should pick up an application at Woodcraft.
- Greg Smith has been investigating different types of glue. He is currently working with Nexabond glue. It is a CA glue alternative.
- The dues notice will be sent out prior to the November meeting. Dues have been increased to \$30 this year to make up for the increased insurance costs.
- The club is now selling Norton 3X sandpaper. Available in 5 sheet packs for \$2.50. Save the envelopes and return to Ron Black.

- Ron Black, the retail chairperson will be placing an order with



Craft Supplies on November 5, if we reach \$1000 it means a 13% discount for everyone ordering.

**BIG SALE**

- Russ introduced Terry Williams who will be



taking over the librarian duties from Gary Clay

- Russ announced that the Presidents Challenge for next month (November meeting) is lidded boxes.

## October 27, 2013 Demonstration by Jim Scarsella

Our demonstration was on tips and techniques for designing and turning a lidded box by Jim Scarsella. The demonstration was packed full of information and was enjoyable to watch. Jim started the demonstration with an explanation of the design elements involved in determining size and shape of the lidded box. He distributed a handout covering just about every possible aspect regarding the designing and turning a lidded box, including books available, DVDs available, and other considerations for wood type and design.

Jim performed flawlessly throughout the demo, putting everyone at ease and wanting to ask questions.

There is a handout available on our website; [Turning Lidded Boxes DAW Demo 2013.pdf](#)

Thank you Jim for the well done demonstration.



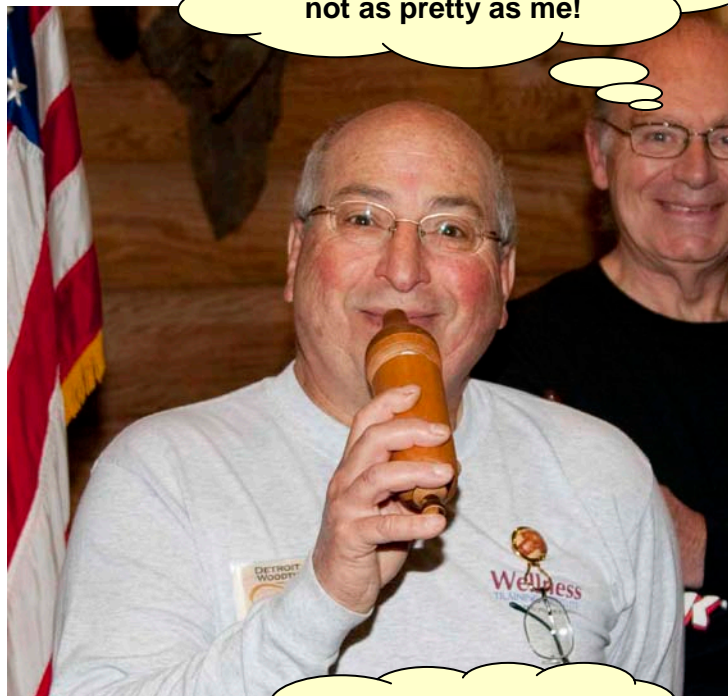
A video is available at;  
<http://youtu.be/J5YmRsMQeu8>

## DAW Meeting, October 27, 2013 (The Presidents Challenge)

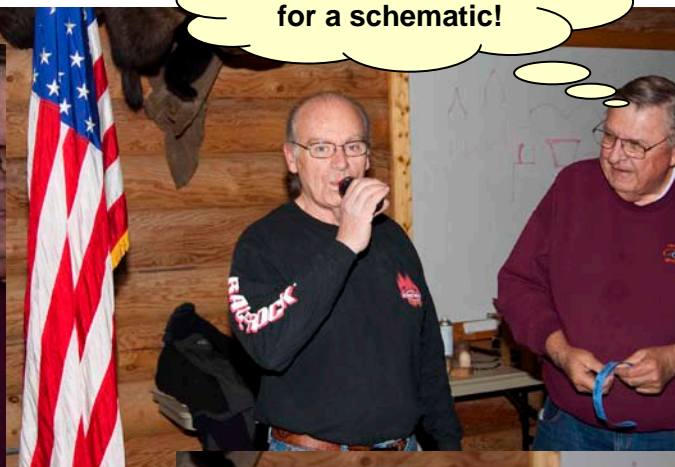
Our 1st President's Challenge:

Month	Project
October	Train Wessel
November	Lidded Box
December	No challenge, due to holiday party
January	Birdhouse Ornament

Sunday, October 27, 2013



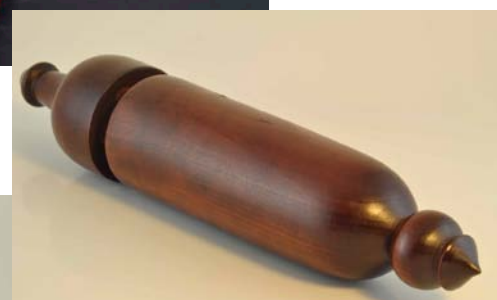
I think he's looking for a schematic!



## DAW Meeting, October 27, 2013 (The Presidents Challenge)

Our 1st President's Challenge:

Sunday, October 27, 2013



And the winner of October's President Challenge is Phil Stevens. (\$10 Gift Certificate)  
You only need to attempt to turn the item for the month to be entered into the drawing.

## DAW Meeting, October 27, 2013

### Detroit Area Woodturners Annual Contest

- Buy 3x3x8 Block for \$5



Plenty of blocks available, just call me!

- Bring it turned to the December meeting and receive a \$10 gift certificate
- 4 Categories of turnings:
  1. Vessels
  2. Lidded Boxes
  3. Hardware Added Like Peppermills
  4. Miscellaneous, Any Thing Goes

#### Rules:

- Must use club supplied block
- Veneer can be used up to 1/4" thick
- No additional wood can be used
- Paint, dyes, carving, and burning can be applied

#### Prizes:

- \$10 Gift Certificate all participants
- +\$20 Rockler Gift certificate for category winner
- + Additional \$30 gift certificate for overall winner

### Raffle



With the club's new format for timing of the events, the raffle began at the end of the meeting, approximately 3:30 PM.

Russ drew the winning numbers for the items in the raffle.



As usual, the organization of the raffle was expedited through the efforts of Bella and Joy Lobaito. Once again, thank you for all of your help with the raffles, it's one of our largest fundraisers.





## Benefits of joining the AAW, American Association of Woodturners

- Six issues of American Woodturner annually
- Automatic participation in periodic drawings for prizes
- Access to all past issues of American Woodturner, viewable online through the website Members Area.
- Access to machine-readable American Woodturner issues for those members who are visually impaired and utilize screen-reading software - contact the webmaster if this applies to you.
- Marketing opportunities on our website for artists, collectors, galleries, and museums.
- Group rates for individual and chapter insurance.
- Savings of up to 50% on AAW merchandise, including project books, DVDs, logo apparel, and more.
- Eligibility to apply for AAW Educational Opportunity Grants.
- AAW Forum and member-only access to articles and resources on our website.
- Eligibility to vote in AAW board elections if a member before the end of August in that year.
- Eligibility to apply for membership in the Professional Outreach Program (POP).
- Access to POP Fellowship grants.
- Exhibit opportunities - AAW members may enter work for the annual juried member exhibit featured at the Symposium, the Gallery of Wood Art in St. Paul, and other venues.
- Annual International AAW Woodturning symposium.
- Demonstration opportunities at AAW symposiums.
- AAW "Resource Directory" that contains a complete listing of contact information for members, local chapters, demonstrators, and other woodturning resources. Updated listings are available to members through the AAW website.
- More than 300 AAW local chapters that offer workshops, camaraderie, opportunities to share ideas and techniques, and access to lending libraries, discounts, and volume purchases.

## Russ Holmes wants you for breakfast



There is a breakfast get together every Tuesday Morning at 8:00am, held at the **Avenue Restaurant** on Woodward Ave at 13 Mile Rd.

All are welcome.



**Uncle Russ want you!**

## October 27, 2013 " Instant Gallery"



Alfred Schembri



Loel Gnadt



Paul Newburger



Roger Meeker

## October 27, 2013 " Instant Gallery" (cont'd)



Mike Leneway



Kelly Friend



Russell Layle

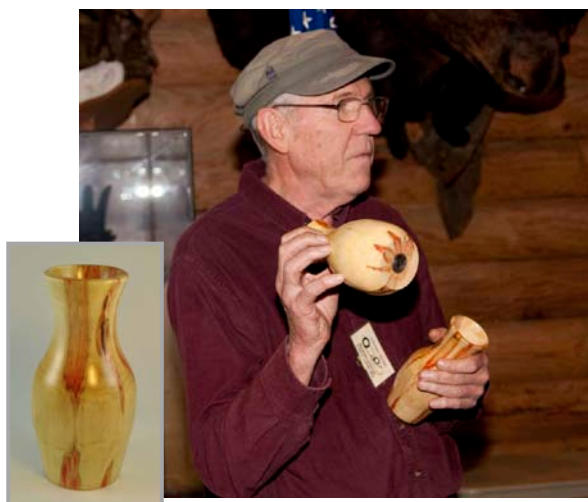


Dennis Montville

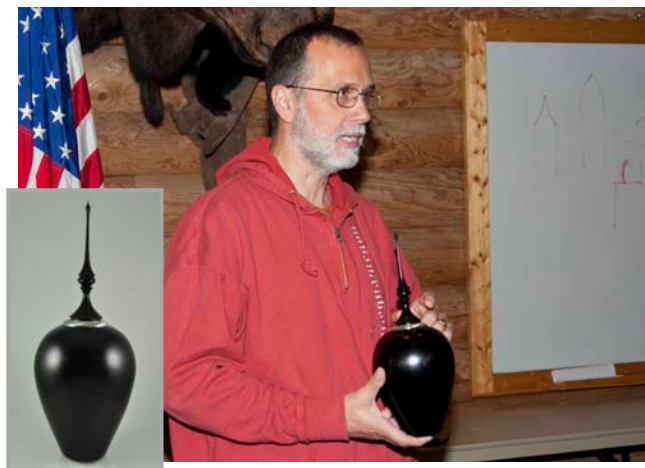


Ben Shipman

## October 27, 2013 " Instant Gallery" (cont'd)



Vince Hellmann



Vince Hellmann

Craig Drozd



Ted Gauthier

## October 27, 2013 "Instant Gallery" (cont'd)



**Victor Lewandowski**



**Bob Daily**



**Jim Scarsella**



## October 27, 2013 Faces in the Crowd





## Shop Visits

A Pictorial Trip to a DAW Member's Workshop  
Our eight trip is to the shop of Vince Hellmann

By Roger Meeker

Photography by  
Jack Parmenter

Vince Hellmann has been married to his wife Jane for 44 years. Jane Hellmann says it only feels like 43 1/2 years. They have 2 grown daughters and are fortunate enough to have 3 granddaughters. They live in a lovely home, on a lovely piece of property in Rochester, and it was designed (as a passive solar home) by Vince and Jane.

As for Vince's background; he has an undergraduate degree in mechanical engineering from GMI and a Masters in engineering from Carnegie Mellon University. You guessed it . . . his past career was intertwined with the automotive industry. He officially retired in 2009. Most of his working career was at General Motors. The last 5 years of his career was focused on developing battery technology for the electric vehicle. In talking with Vince, you can tell he still has a strong interest in the technologies that have driven forward the electric vehicle.

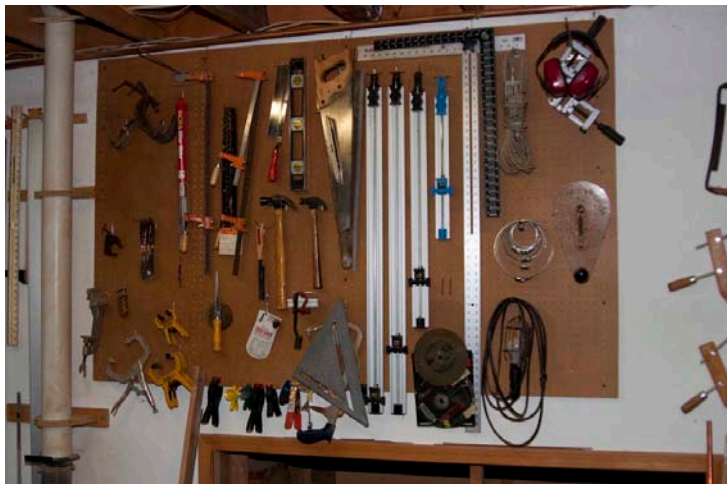
Enough of the background, let's talk about the wood! Vince has a great workshop and well thought out floor plan.

I've marked the entrance to his shop in the photo below. Imagine walking into his shop and



immediately turning to your left, and then imagine following that outer wall all the way around the perimeter of his work area, and that's how I will attempt to show and describe his workshop. And yes, the 1st item you will encounter is Vince's a table saw. Looking at the left side of the photo, you'll notice a built-in wood storage area for smaller pieces.

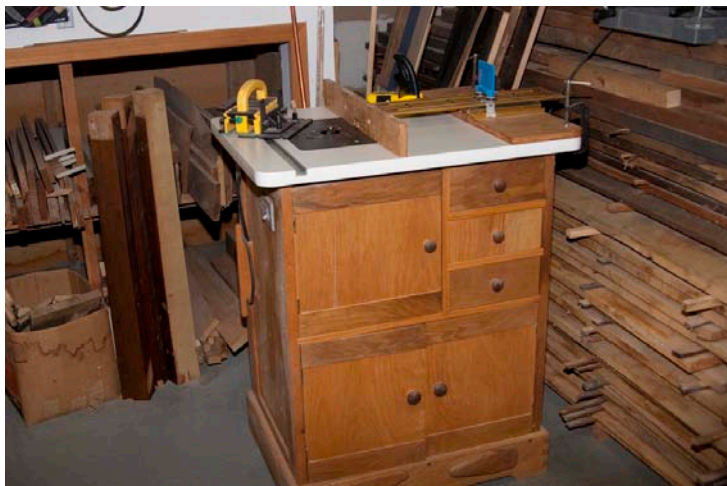
Directly above the storage area is an area for some of Vince's clamps, and I think we all know, you can never have too many clamps.



As we continue around the perimeter, you can see Vince's dust collection system in the corner. Yes, he made it and it works great.



In the next photo, Vince has designed and built an exceptionally functional router table and an all-in-one router cabinet. Yes, there's more wood storage directly to the right and also behind the router cabinet.



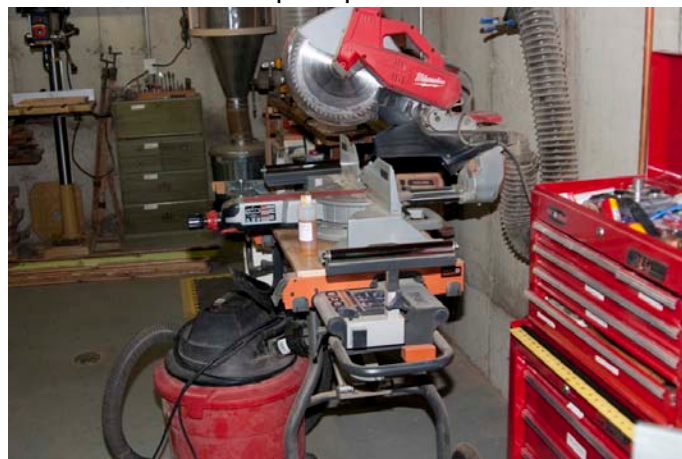
Once you make the turn, Vince has a workbench set up both for storage and a practical work area.



In this photo, we make our 1st turn and see one of the end walls in the shop. A variable speed Powermatic drill press resides at the end wall accompanied by a handy storage cabinet.



Moving along the wall, there is a great miter box saw and stand set up. A portable tool card can



also be seen directly to the right of the miter box saw.



Next, we come to a 14 inch Rikon band saw with a 13 inch re-saw capacity.



Before I forget, in many of these photos you should notice a PVC system of pipes for the dust collection unit, there are multiple outlets everywhere.

As we come around the corner against the wall is a grinding station, serving both the Delta in the Jet



lathe. The Jet lathe seen in the foreground is mounted to a island workbench. Viewing the front right corner of this image is a CNC unit which attaches to the Jet lathe.



Vince's main lathe is a Delta with either a 14 inch or 16 inch swing. And directly behind, a few of the jigs hand made by Vince.



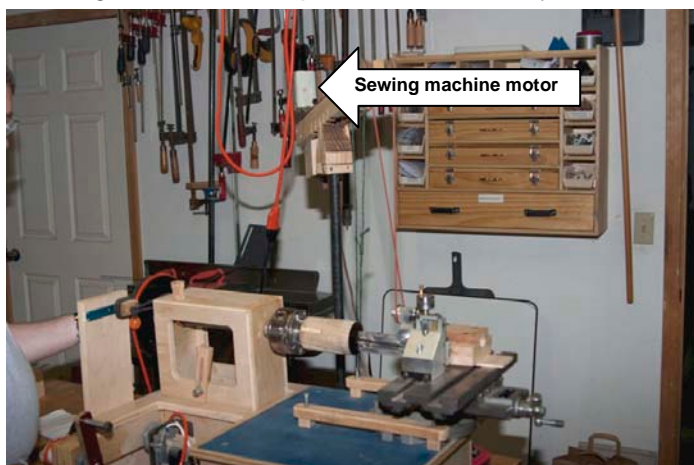
Moving around the corner and additional clamps can be seen in a custom storage cabinet as well.



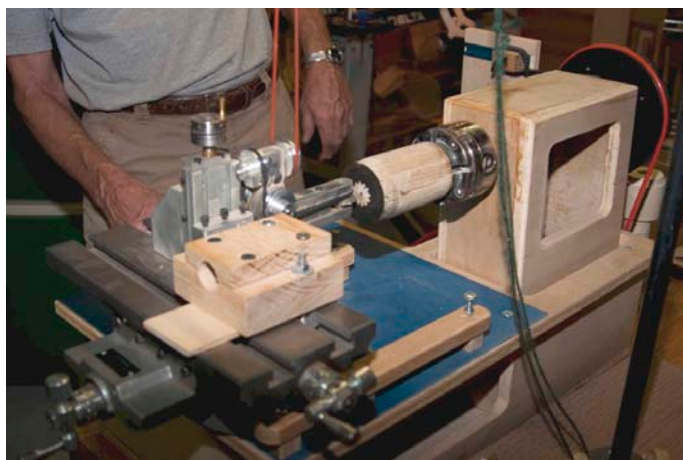
Now for the good stuff! Vince has built a Rose Engine Ornamental Turning Machine. I was



privileged to have a demonstration of this type of turning. 1st let me explain the machinery.

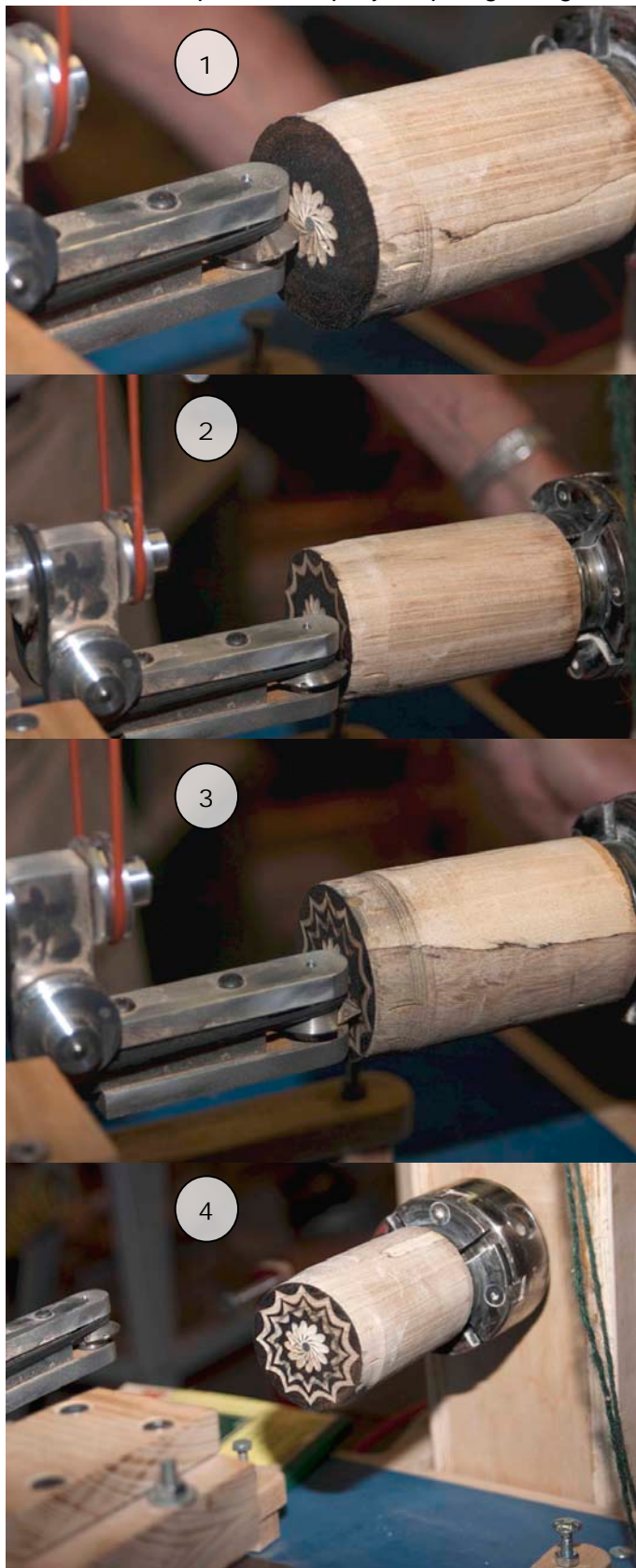


The sewing machine motor drives a very thin reddish orange belt powering the cutter. Another

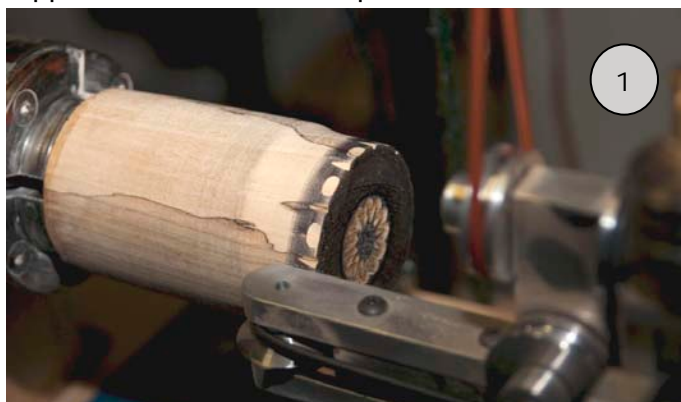


motor drives a pattern disk which causes the wood mounted in the chuck to rotate and sway to the side. The only movement in the cutting head is to slowly increase pressure toward cutting the wood.

Here's an example of a step-by-step engraving;



Another example with the cutter positioned on the opposite side of the wood piece held in the chuck.



Very interesting work, I truly see an application in many different woodturning areas. The construction and operation of a Rose Engine requires a level of patience which I probably do not possess.

Vince is very methodical in his approach for seeking a solution to most problems. The natural mechanical engineer in Vince is very evident in the way he works.



Outside of the workshop is another lumber rack along with a few of Vince's bowls recently completed.



Directly outside the workshop entrance is a desk and computer where Vince does a lot of his project planning.

What a pleasure it has been to view Vince's workshop and his work. I've really only become friends with Vince in 2013, it's my loss that I didn't know him sooner, a very interesting and energetic fellow Hoosier.

Thanks again for your hospitality!

With crossed chisels  
Vince bids us farewell



## Wood of the Month - African Padauk

### African Padauk



**Common Name(s):** African Padauk, Vermillion  
**Scientific Name:** Pterocarpus soyauxii  
**Distribution:** Central and tropical west Africa  
**Tree Size:** 100-130 ft (30-40 m) tall, 2-4 ft (.6-1.2 m) trunk diameter  
**Average Dried Weight:** 46 lbs/ft<sup>3</sup> (740 kg/m<sup>3</sup>)  
**Specific Gravity (Basic, 12% MC):** .61, .74  
**Janka Hardness:** 1,970 lbf (8,760 N)  
**Modulus of Rupture:** 16,830 lbf/in<sup>2</sup> (116.0 MPa)  
**Crushing Strength:** 8,130 lbf/in<sup>2</sup> (56.0 MPa)  
**Shrinkage:** Radial: 3.3%, Tangential: 5.2%, Volumetric: 7.6%, T/R Ratio: 1.6

**Color/Appearance:** Heartwood color can vary, ranging from a pale pinkish orange to a deep brownish red. Most pieces tend to start reddish orange when freshly cut, darkening substantially over time to a reddish/purplish brown to nearly black.

**Grain/Texture:** Grain is usually straight, but can sometimes be interlocked. With a coarse, open texture and good natural luster.

**Endgrain:** Diffuse-porous; large pores in no specific arrangement; solitary and radial multiples of 2-3; mineral deposits occasionally present; growth rings indistinct; rays not visible without lens; apotracheal parenchyma diffuse-in-aggregates, banded; paratracheal parenchyma aliform (winged), confluent, and banded.

**Rot Resistance:** Has excellent decay resistance, and is rated as durable to very durable. Padauk is also reported to be resistant to termites and other insects.

**Workability:** Overall Padauk is easy to work; tearout may also occur during planing on quartersawn or interlocked grain. Padauk turns, glues, and finishes well.

**Odor:** Padauk has a faint, pleasing scent while being worked.

**Allergies/Toxicity:** Although severe reactions are quite uncommon, Padauk has been reported as a sensitizer. Usually most common reactions simply include eye, skin, and respiratory irritation.

**Pricing/Availability:** Widely imported as lumber in a variety of lengths and thicknesses, as well as turning and craft blanks. Should be moderately priced for an import.

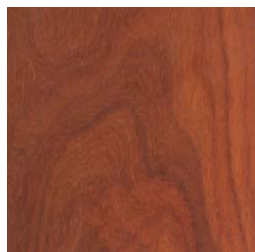
**Sustainability:** This wood species is not listed in the CITES Appendices or on the IUCN Red List of Threatened Species.

**Common Uses:** Veneer, flooring, turned objects, musical instruments, furniture, tool handles, and other small specialty wood objects.

**Comments:** Padauk has a very unique reddish orange coloration, and the wood is sometimes referred to by the name Vermillion. Unfortunately, this dramatic color is inevitably darkened to a deep reddish brown color. UV-inhibiting finishes may prolong, but not prevent the gradual color-shift of this brightly colored wood. Padauk is moderately heavy, strong, and stiff, with exceptional stability. It's a popular hardwood among hobbyist woodworkers because of its unique color and low cost.

### Scans/Pictures:

Padauk (sanded)



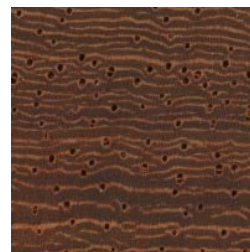
Padauk (sealed)



Padauk (endgrain)



Padauk (endgrain 10x)



# REPRINT

An article written by one of our members granddaughter (Jack Parmenter)

## Woodturning-An American Tradition

*By Alyson Walters (Jack Parmenter's granddaughter)*

For centuries, men have acquired a talent that serves as an important part of cultures everywhere. An art depicted through the history of our ancestors, one that serves a fruitful purpose today; this art that is none other than wood turning. Wood turning, by definition, is: a form of woodworking used to create wooden objects on a lathe. Or, in a specific definition that truly speaks the culture: the art or process of fashioning wooden pieces or blocks into various forms and shapes by means of a lathe.

Wood turning is an art and hobby. Many things can be carved out of all kinds of woods with the lathe, a wood working instrument that can allow one to carve any kind of item. Baseball bats are a fun project. This project was done by Shae Walters. Shae is a twelve year old going to eighth grade in the fall. He made his bat with his grandfather (Jack Parmenter), which was a good way for the two to bond and create some memories. Shae's bat is not his only project he has created on the lathe. Gavin, his younger brother, has made rings, and both have made homemade pens, a project fun and profitable.

Woodturning is a craft that defines an American culture because it was the earliest craft and job. It wasn't however the invention of Americans. Traces of this ancient art were depicted in Egyptian hieroglyphics. The carvings don't show the traditional lathe used today, but a wood tool instrument that leads to the conclusion that this was the first wooden lathe. The lathe is a cherished tool that helped make weapons, jewelry, decoration, and other things like bowls and vases, things that have improved the lives of many in America.

Woodturning has always been a process involving patience and effort, which can make all the difference. All positive thoughts lead to positive things right? What you put in is what you will get out. That's why all woodturning projects are quality, because it's created by someone who cares about their work. And we wouldn't want it any other way.

## Links - Suppliers

 **Hartville Tool**

<http://www.hartvilletool.com>

800-345-2396

Woodturning Supplies

**Craft Supply**

<http://www.woodturnerscatalog.com>

800-551-8876

Woodturning Supplies

**Packard**

<http://www.packardwoodworks.com>

800-683-8876

Woodturning Supplies

 **Klingspor**

<http://www.woodworkingshop.com>

800-228-0000

Abrasives and woodturning supplies

**2Sand.com**

<http://www.2Sand.com>

877-644-7445

Sanding Supplies

 **Choice Woods**

<http://www.choice-woods.com>

888-895-7779 or 502-637-1190

Wood, Turning Stock, supplies

**New**

 **Landfill Lumber**

[www.landfilllumber.com](http://www.landfilllumber.com)

586-563-0441

Victor Lewandowski - Wood, Turning Stock

**Richard Lauwers**

810-724-2263

Kiln dried oak and maple

 **Rockler**

<http://www.rockler.com>

800-279-4441

Woodworking and Hardware

**Woodcraft**

<http://www.woodcraft.com>

800-225-1153

Woodworking and Hardware

**The Sanding Glove**

<http://www.thesandingglove.com>

800-995-9328

Sanding Supplies

**Log 2 Lumber - Chuck Lobaito**

[www.log2lumber.com](http://www.log2lumber.com)

248-535-5035

[log2lumber@gmail.com](mailto:log2lumber@gmail.com)

Portable Saw Mill

When ordering be sure to inform the store of your Detroit Area Woodturners membership  
(Discounts may apply - usually 10% or Club Credit)

## Links - Woodturning Information

**AAW - National Organization**

[American Association of Woodturners](http://www.americanassociationofwoodturners.com)

**Detroit Area Woodturners** ( Shelby Twp, MI )

Web Site: <http://www.detroitareawoodturners.com/>

**Grand River Woodturners Guild** ( Grand Rapids, MI )

Web Site: <http://www.grandriverwoodturners.org>

**Arrowmont School of Arts and Crafts**

Web Site: <http://www.arrowmont.org/>

**John C. Campbell Folk School**

Web Site: <http://www.folkschool.org>

**Al Stirt: Woodturner, Artist and Teacher**

Web Site: <http://www.alstirt.com>

**Michigan Association of Woodturners** ( Holly, MI )

Web Site: <http://www.michiganwoodturner.org>

**Blue Water Area Woodturners** ( Richmond, MI )

Web Site: <http://www.bluewaterareawoodturner.org>

**Ohio Valley Woodturners Guild** ( Cincinnati, OH )

Web Site: <http://www.ovwg.org>

**Marc Adams School of Woodworking**

Web Site: <http://www.marcadams.com/>

**Woodcraft of Sterling Heights** (586) 268-1919

Web Site: <http://www.woodcraft.com>

**John Jordan Woodturner**

Web Site: <http://www.johnjordanwoodturning.com>

## Need Your Help

### **From the Editor**

Articles are due at the monthly meeting (for example submit at or before the October meeting for the October Newsletter) and should be submitted to Roger Meeker at [rmeeker26@gmail.com](mailto:rmeeker26@gmail.com) .

### **Member Projects**

If you have a woodturning project that you would like to showcase to our club members, you can send me detailed information about your project with pictures.

### **Articles on New Woodturning Techniques and Tools**

If you come across an article, wish to write an article on a new wood turning technique, care to write a review or want to forward on a review of a new wood turning tool, please feel free to do so. Any photos will be helpful.

### **Shop Talk**

Everyone has a different way of doing things in their shop and everyone's shop is different in many ways; whether it's size, location, or physical layout you are probably doing something that would be helpful for others to see.

### **Members Questions & Answers**

Members are asked to submit woodturning, finishing and tool questions to our resident experts to answer. There are no dumb questions; someone else in the club may have had the same questions.

### **Classified Ads**

Ads for woodturning and woodworking related items are free to members. Send detailed information with pictures.

### **Wood to Turn**

Do you have wood, need wood or know about wood that is available for turning? Let me know and I'll pass it along

### **From the Editor, Again**

Let's make this newsletter something interesting, if you send it, we'll publish it.

### **Footnote**

If possible, please send a digital file (I don't type very well). Thank you!