

# Shavings

April 2014

## Al Stirt

One Day Demonstration

Two Days Hands-on Labs



## Finials

A demonstration by Matt Harber.

Show & Tell Images

April Meeting Notes

Wood of the Month

## **Newsletter Contents**

- 
- 2 Chapter Information**
  - 2 Board & Committee Members**
  - 3 Meeting Location**
  - 4 Upcoming Events**
  - 4 Library**
  - 4 Presidents Corner**
  - 5 AI Stirt**
  - 7 Hands-on Labs with AI Stirt**
  - 10 Meeting Notes**
  - 11 Safety Minute**
  - 12 Meeting Demonstration**
  - 13 Presidents Challenge**
  - 14 Show & Tell**
  - 23 Faces in the Crowd**
  - 24 Wood of the Month**
  - 26 Links**

**Members**

**Board Members:**

- President: .....Phil Stevens
- 1st VP: .....Roger Meeker
- 2nd VP: .....Dennis Montville
- Secretary: .....Roger La Rose
- Treasurer: .....Chuck Lobaito

**Committee Members:**

- Asset Manager: .....Alfred Schembri
- Librarian: .....Terry Williams
- Member Chair: .....Jim Scarsella
- Mentor Program: .....Ray Frase
- Newsletter Editor: .....Craig Drozd
- Photography: .....Jack Parmenter & Roger Meeker
- Door Prizes: .....Joy & Bella Lobaito
- Resale Chair: .....Ron Black
- Video: .....Paul Neuburger
- Web Site: .....Roger Meeker

**Chapter Information**

The **Detroit Area Woodturners** (DAW) is a local chapter of the **American Association of Woodturners** (AAW). The AAW is an international, not-for-profit organization dedicated to the advancement of the woodturning craft. Our mission is to provide information, education, a meeting place, and an effective organization or all who are interested in turning wood.



The DAW web site can be found at:  
<http://detroitareawoodturners.com>



The AAW web site can be found at:  
<http://www.woodturner.org>

**Membership**

Yearly chapter dues are \$30 per individual or \$35 a family. Membership is for the calendar year. These dues help the club provide tools for our monthly demonstrations, bring in outside demonstrators, have a yearly picnic and other club related activities.

Renewal forms are mailed to current members in November of each year.

New members can obtain a membership form from the website under the CHAPTER INFO tab.

[Member Registration Form](#)

## Meeting Location

Our Meetings are on the third Sunday of the month (September through June) starting at 1:30 pm and ending by 4:00 pm. We meet at the Shadbrush Nature Center located in Shelby Township, Michigan, approximately 2 miles north of M-59 and 10½ miles east of I-75. The meeting is in a large log cabin located just inside the park entrance to the left (North).



**Our May 18th meeting location is not at the normal place!!!!**

**We will be meeting at:**

**Detroit Sportsmen's Congress**

**49800 Dequindre Road, Shelby, MI 48317**



**May's meeting will be from 2:30pm until 5:00pm.**

## Upcoming Events

### Utah Woodturning Symposium

May 15-17, 2014

<http://www.utahwoodturning.com>

### DAW May meeting

Sunday May 18, 2014 at 1:30 PM

Joyner Pendent Jig Demonstration

### AAW's 28th International Symposium in Phoenix AZ

June 13-15, 2014

<http://woodturner.org/sym/sym2014/>

### Turn On! Chicago Symposium

August 15-17, 2014

<http://www.turnonchicago.com>

## Library

The library is available for all current club members. We have many books, magazines and DVDs available to check-out. A list of materials is available on the DAW website.

### [Library](#)

Please help us maintain the library by returning checked out items promptly.

The library is maintained by Terry Williams.

Terry is always willing to take requests for new material.

## Presidents Corner



Thank you for another great meeting with lots of people and many new members and guests. And thank you to everyone who is participating in the President's Challenge. The challenge lets us all apply what we have learned during the meeting to reinforce it and then to take it to another level. I can't wait to see what you all come up with that will have a final attached.

I also want to thank you for your input on demonstrations for next year and for those who also volunteered to help by giving a demo. One of the hardest things for the Board Members is to try and pick demonstrations that will appeal to the majority of the members. It is a delicate balancing act to educate, entertain, inform and keep everyone interested at the same time. We still need some more ideas for next year, so if you think of something before the next meeting, drop me or anyone else on the Board an email. And if you want to do a demo, let us know that also.

If you have something you want to talk to someone on the Board about, please feel free to send us an email at any time. Waiting to talk with us at the meeting may not be the best time as we are typically pulled in many directions during a meeting and may not have the time to dedicate to a good discussion on your idea or comment. Additionally, I will only speak for myself on this matter, but it is sometimes hard to remember all that went on during the meeting and some good ideas may be forgotten by the time I get home.

So thank you again for another great meeting and keep those demo ideas and chips flying,

Phil

## Al Stirt Demonstration

On April 5th the Detroit Area Woodturners welcomed Al Stirt to the Detroit area for a weekend of demonstrations and woodturning. Al is a professional woodturner and longtime member of the AAW.

For Saturday's demonstration we had 57 turners in attendance from four different area clubs. It was a great turnout.

The day started out with the DAW President welcoming everyone and introducing the guests in attendance. Upon entry everyone was given a door prize ticket. Phil drew three tickets, one was for an Al Stirt signature finishing gouge.



Al started by roughing out a bowl from wet wood to demonstrate his tool techniques and how to get good grain alignment. He calls this 'balancing the grain'. Al showed some pictures to give the audience a better understanding of what he means by grain alignment and comparisons between an aligned bowl and one without grain alignment. When looking at the bowl from above the grain pattern should show a side to side symmetry, this is what is referred to as balanced. In a balanced bowl the growth rings will be parallel to the surface the bowl is sitting on.

Balancing works best for straight grain woods.

When mounting the log in the lathe, getting the growth rings parallel to the lathe will achieve the desired effect. Several tricks can be used to do this. When chain sawing the log, its best to leave the bark on. The bark can be considered a growth ring. Aligning the bark, perpendicular with the lathe bed, is a good starting point. The tree's pith can often grow at angles so don't depend on it for grain alignment. Another way to balance is to identify a growth ring on the edges of the log. If you can trace the ring all the way around the log then you have another reference point for mounting it perpendicular to the lathe bed.

Once the log is mounted, the alignment will need to be tweaked to refine the balance. A few test cuts will show which direction the log needs to move. There are many different ways to mount the log that will allow for changing the alignment. Al prefers a jig he created called the bowl driver. A bowl driver consists of a hardwood plate, center lag bolt and two machine bolts. The center lag bolt fits into a hole in the log to provide some stability and prevents the log from slipping; it does not screw into the log.



## Al Stirt Demonstration (Continued)



The two machine bolts provide a pivoting location for the log and should be placed cross-grain on the log. Directions for creating your own bowl driver are available as a pdf on Al's website.

Al showed how he uses a scraper to perform a leveling cut. This helps create a smoother surface after using the gouge.

He then made one of his signature platters. Starting with the wood between a screw center and tail stock, the back side is turned first. He demonstrated several variations of beads and coves he uses to decorate the back side of platters. Once the majority of the back is turned and a tenon for a chuck is created, the piece is reversed. The front of the platter is then turned. A vacuum chuck is used to reverse the piece again and remove the tenon from the rear of the platter.

Al painted the platter rim with a black gesso. Then he demonstrated several techniques for laying out designs and carving them.



He then followed the same process while demonstrating turning a square platter. After completing the turning part he decorated it using rotary bits and milk paint.



**Hands-on Labs with Al Stirt**





**Hands-on Labs with Al Stirt**



# Hands-on Labs with Al Stirt



## Sunday April 27, 2014 Meeting Notes



President Phil Stevens conducts the April club meeting

- Phil started the meeting with the Presidents Challenge drawing for two \$10 gift certificates.
- Phil discussed a Safety Minute as a result of a catch he had while turning a bowl. He showed a new face shield that can be used by the club demonstrators.
- New member / guest introduction; we had four new members / guests today.
- Glen has a Jet 1236 lathe he would like to sell.
- Phil talked about why everyone should join the AAW.
- Craft supplies support the club so consider supporting them.
- The AAW symposium in Phoenix is coming up. Phil has brochures if you're interested.
- Phil introduced the DAW board and committee members.
- Jim Scarsella has name badges for the members that have joined recently. Please see him if you need one.
- All items from last month's logo wear are in and available.
- The bandsaw blade orders from last meeting are in and available.
- The club has a new jet lathe. We got a good deal through Performance Line Tools.
- The club is looking at creating a shield and stand for the new lathe. Vince and Chet were volunteered for this task.
- May demo will be by Chuck.
- Phil discussed the new location and time for the May meeting. This is a onetime event because of a conflict with Shadbush.
- Phil mentioned the upcoming open house at Ray Frase's shop in May.
- 1st Vice President Roger Meeker discuss the upcoming June 8th turn-a-thon picnic. He showed some slides from last year's event. Members are encouraged to bring their spouses to the picnic. Last year was the biggest picnic yet and we hope to make this year's even bigger.
- Phil reviewed more of the club survey responses.
- The club is looking for ideas for demonstrators next year. If you have any ideas please let a board member know.
- Don has some urethane / wood blanks for sale.

## Safety Minute

The AAW site has a great page with 26 safety reminders.

<http://www.woodturner.org/?page=Safety>



## Demonstration by Matt Harber



Matt demonstrated his process for making finials. There are a lot of different styles of finials. Finding/creating one that matches the piece it will reside on takes practice. Matt showed the audience pictures of many different designs. The pictures are all available on the DAW website:

<http://detroitareawoodturners.com/resources>

Matt starts by turning the tenon and base of the finial first. After that he reverses the piece and leaves it in that configuration until it is complete.

Matt showed a string steady that he likes to use. There are two different ways of stringing the steady, the 3 or 4 point wrapping scheme. Matt prefers the 3 point scheme. Links for creating a string steady is also available in the DAW resource section.

A video of Matt's demonstration is at:

<http://youtu.be/6EMPi1d0p6Q>

Matt did a great job of demonstrating. Watch the video of the demo to see all the other tips Matt offers for making finials.



# Presidents Challenge

Every month there will be a Presidents Challenge. Everyone that enters will be in a drawing to win a prize for that month. Ideally, the challenge project will be something relating to the prior month's demonstration.

Month	Project
April	Bowl from a board
May	Finials

## Bowl from a Board



# Show & Tell



**Show & Tell (Continued)**





# Show & Tell (Continued)



**Show & Tell (Continued)**



Show & Tell (Continued)



**Show & Tell (Continued)**



**Show & Tell (Continued)**



**Show & Tell (Continued)**



**Show & Tell (Continued)**



# Faces in the Crowd





## Wood of the Month – White Ash



**Common Name(s):** White Ash, American White Ash

**Scientific Name:** *Fraxinus americana*

**Distribution:** Eastern North America

**Tree Size:** 65-100 ft (20-30 m) tall, 2-5 ft (.6-1.5 m) trunk diameter

**Average Dried Weight:** 42 lbs/ft<sup>3</sup> (675 kg/m<sup>3</sup>)

**Specific Gravity (Basic, 12% MC):** .55, .67

**Janka Hardness:** 1,320 lbf (5,870 N)

**Modulus of Rupture:** 15,000 lbf/in<sup>2</sup> (103.5 MPa)

**Elastic Modulus:** 1,740,000 lbf/in<sup>2</sup> (12.00 GPa)

**Crushing Strength:** 7,410 lbf/in<sup>2</sup> (51.1 MPa)

**Shrinkage: Radial:** 4.9%, **Tangential:** 7.8%, **Volumetric:** 13.3%, **T/R Ratio:** 1.6

**Color/Appearance:** The heartwood is a light brown color, though darker shades can also be seen, which is sometimes sold as Olive Ash. Sapwood can be very wide, and tends to be a beige or light brown; not always clearly or sharply demarcated from heartwood.

**Grain/Texture:** Has a medium to coarse texture similar to oak. The grain is almost always straight and regular, though sometimes moderately curly or figured boards can be found.

**Endgrain:** Ring-porous; large earlywood pores 2-4 rows wide, small latewood pores solitary and radial multiples; tyloses common; parenchyma banded (marginal), paratracheal parenchyma around latewood pores vasicentric, winged and confluent; narrow rays, spacing normal.

**Rot Resistance:** Heartwood is rated as perishable, or only slightly durable in regard to decay. Ash is also not resistant to insect attack.

**Workability:** Produces good results with hand or machine tools. Responds well to steam bending. Glues, stains, and finishes well.

**Odor:** Can have a distinct, moderately unpleasant smell when being worked.

**Allergies/Toxicity:** Ash in the *Fraxinus* genus has been reported to cause skin irritation, and a decrease in lung function.

**Pricing/Availability:** Ash is among the least expensive utility hardwoods available domestically; it should compare similarly to oak in terms of price.

**Sustainability:** This wood species is not listed in the CITES Appendices or on the IUCN Red List of Threatened Species.

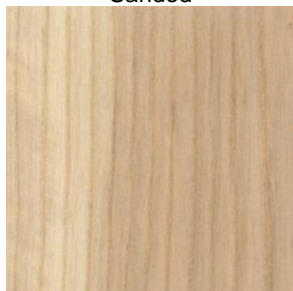
**Common Uses:** Flooring, millwork, boxes/crates, baseball bats, and other turned objects such as tool handles.

**Comments:** White Ash has fairly good strength properties for its weight, and is also shock resistant.

**Related Species:** •Black Ash (*Fraxinus nigra*), •Blue Ash (*Fraxinus quadrangulata*), •European Ash (*Fraxinus excelsior*), •Green Ash (*Fraxinus pennsylvanica*), •Oregon Ash (*Fraxinus latifolia*), •Pumpkin Ash (*Fraxinus profunda*), •Olive Ash, •Swamp Ash

### Pictures

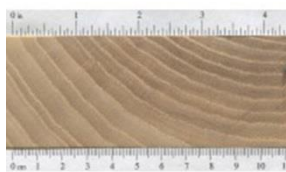
Sanded



Sealed



End grain



End grain zoom



**Benefits of joining the American Association of Woodturners (AAW)**

- Six issues of American Woodturner annually
- Automatic participation in periodic drawings for prizes
- Access to all past issues of American Woodturner, viewable online through the website Members Area.
- Access to machine-readable American Woodturner issues for those members who are visually impaired and utilize screen-reading software - contact the webmaster if this applies to you.
- Marketing opportunities on our website for artists, collectors, galleries, and museums.
- Group rates for individual and chapter insurance.
- Savings of up to 50% on AAW merchandise, including project books, DVDs, logo apparel, and more.
- Eligibility to apply for AAW Educational Opportunity Grants.
- AAW Forum and member-only access to articles and resources on our website.
- Eligibility to vote in AAW board elections if a member before the end of August in that year.
- Eligibility to apply for membership in the Professional Outreach Program (POP).
- Access to POP Fellowship grants.
- Exhibit opportunities - AAW members may enter work for the annual juried member exhibit featured at the Symposium, the Gallery of Wood Art in St. Paul, and other venues.
- Annual International AAW Woodturning symposium.
- Demonstration opportunities at AAW symposiums.
- AAW "Resource Directory" that contains a complete listing of contact information for members, local chapters, demonstrators, and other woodturning resources. Updated listings are available to members through the AAW website.
- More than 300 AAW local chapters that offer workshops, camaraderie, opportunities to share ideas and techniques, and access to lending libraries, discounts, and volume purchases.

**Russ Holmes wants you for breakfast**

There is a breakfast get together every Tuesday Morning at 8:00am, held at the **Avenue Restaurant** on Woodward Ave at 13 Mile Rd.

All are welcome.

## Links for Suppliers

★ When ordering from a star supplier, be sure to inform them of your Detroit Area Woodturners membership Discounts may apply – usually 10% or Club Credit)

Hartville Tool

<http://www.hartvilletool.com>

800-345-2396

Woodturning Supplies



Landfill Lumber

<http://landfilllumber.com/>

586-563-0441

Victor Lewandowski -Woodturning Stock



Craft Supply

<http://www.woodturnercatalog.com>

800-551-8876

Woodturning Supplies

Richard Lauwers

810-724-2263

Kiln dried oak and maple

Packard

<http://www.packardwoodworks.com>

800-683-8876

Woodturning Supplies

Rockler

29918 Woodward Ave, Royal Oak, MI 48073

248-543-5110

DAW Discount only at this location



Klingspor

<http://www.woodworkingshop.com>

800-228-0000

Abrasives and woodturning supplies

Woodcraft

<http://www.woodcraft.com>

800-225-1153

Woodworking and hardware

2Sand.com

<http://www.2Sand.com>

877-644-7445

Sanding Supplies

The Sanding Glove

<http://www.thesandingglove.com>

800-995-9328

Sanding Supplies

Choice Woods

<http://www.choice-woods.com>

888-895-7779 or 502-637-1190

Wood, turning stock & supplies

Log 2 Lumber

<http://log2lumber.com>

248-535-5035

Chuck Lobaito – Portable saw mill

## Links for Clubs and Turners

### AAW - National Organization

Web Site: <http://www.woodturner.org/>

### Michigan Association of Woodturners ( Holly, MI )

Web Site: <http://www.michiganwoodturner.org>

### Detroit Area Woodturners ( Shelby Twp, MI )

Web Site: <http://www.detroitareawoodturners.com/>

### Blue Water Area Woodturners ( Richmond, MI )

Web Site: <http://www.bluewaterareawoodturners.org>

### Grand River Woodturners Guild ( Grand Rapids, MI )

Web Site: <http://www.grandriverwoodturners.org>

### Ohio Valley Woodturners Guild ( Cincinnati, OH )

Web Site: <http://www.ovwg.org>

### Arrowmont School of Arts and Crafts

Web Site: <http://www.arrowmont.org/>

### Marc Adams School of Woodworking

Web Site: <http://www.marcadams.com/>

### John C. Campbell Folk School

Web Site: <http://www.folkschool.org>

### Woodcraft of Sterling Heights (586) 268-1919

Web Site: <http://www.woodcraft.com>

### Al Stirt: Woodturner, Artist and Teacher

Web Site: <http://www.alstirt.com>

### Rockler

Web Site: <http://www.rockler.com>

## We Need Your Help

### From the Editor

Articles are due at the monthly meeting (for example, submit at or before the February meeting for the February Newsletter) and should be submitted to Craig Drozd at [Craig.Drozd@outlook.com](mailto:Craig.Drozd@outlook.com).

### Member Projects

If you have a woodturning project that you would like to showcase to our club members, you can send me detailed information about your project with pictures.

### Articles on New Woodturning Techniques and Tools

If you come across an article, wish to write an article on a new wood turning technique, care to write a review or want to forward on a review of a new wood turning tool, please feel free to do so. Any photos will be helpful.

### Shop Talk

Everyone has a different way of doing things in their shop and everyone's shop is different in many ways; whether it's size, location, or physical layout you are probably doing something that would be helpful for others to see.

### Members Questions & Answers

Members are asked to submit woodturning, finishing and tool questions to our resident experts to answer. There are no dumb questions; someone else in the club may have had the same questions.

### Classified Ads

Ads for woodturning and woodworking related items are free to members. Send detailed information with pictures.

### Wood to Turn

Do you have wood, need wood or know about wood that is available for turning? Let me know and I'll pass it along.

### From the Editor, Again

Let's make this newsletter something interesting, if you send it, we'll publish it.

### Footnote

If possible, please send a digital file (I don't type very well). Thank you!