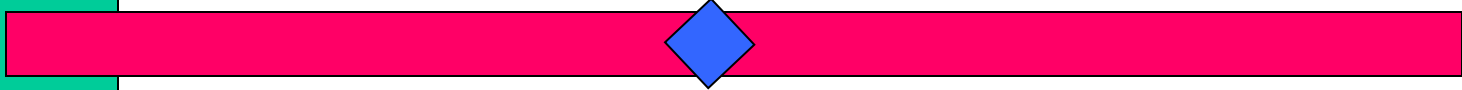


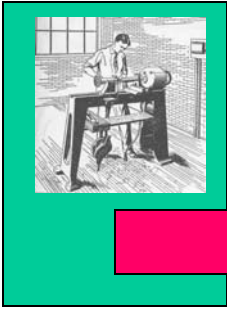
Segmented Turning



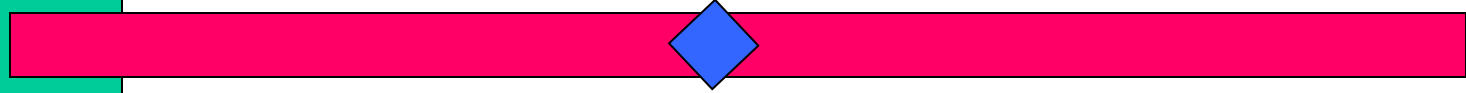
“I will not live forever. But if I am fortunate enough to be granted a moment to reflect upon my life at my time of passing I hope I can look back and know that what I’ve learned will not die with me, but will live on in the minds of those I’ve taught.”

Dennis W. Montalle

October 5, 2002

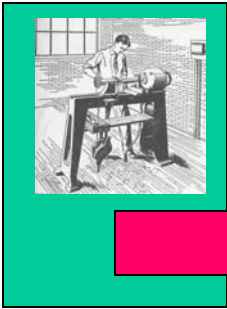


Segmented Turning

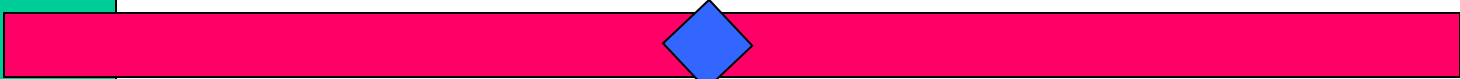


“Tiebreaker” is a piece that is not fundamentally difficult, but it does take considerable time and perseverance.

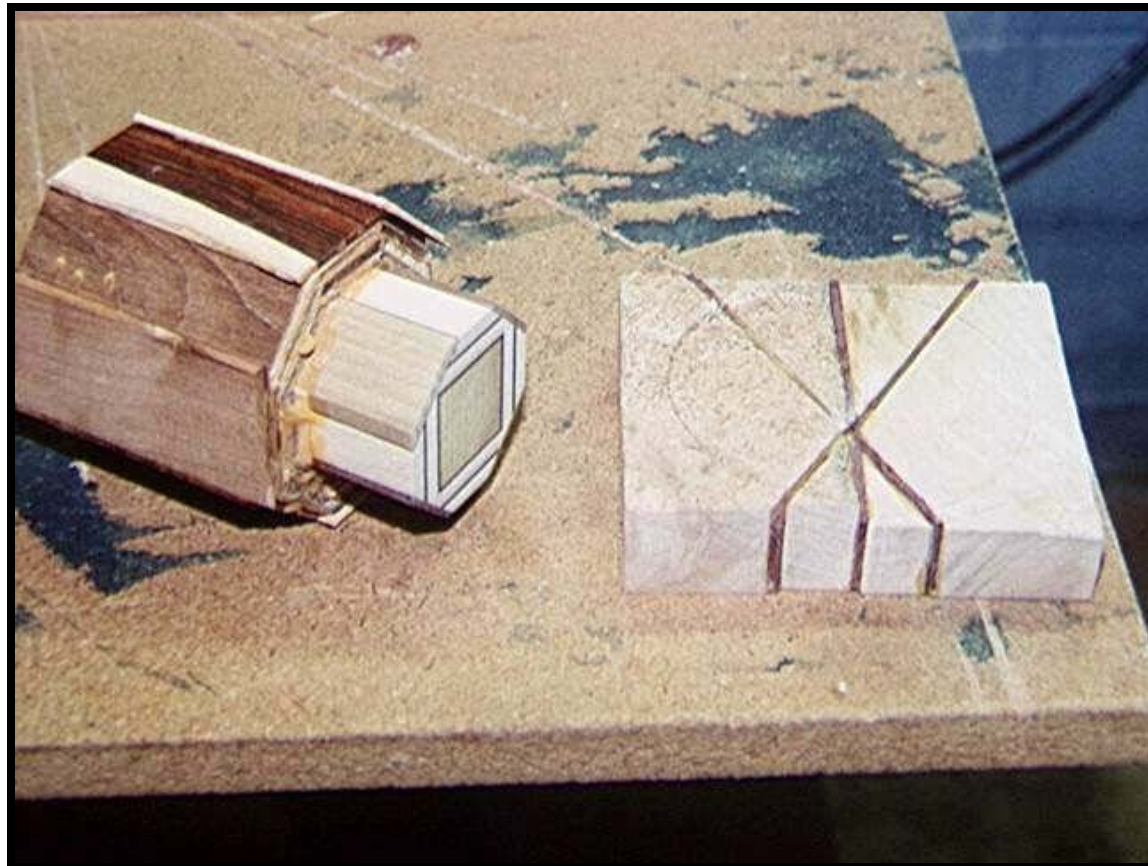
The basic technique offers many possibilities for different types of shapes and designs.



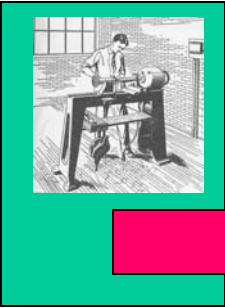
Segmented Turning



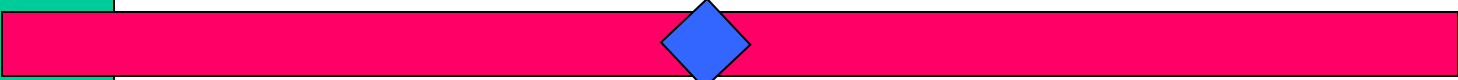
8-Plane Laminated lay-up



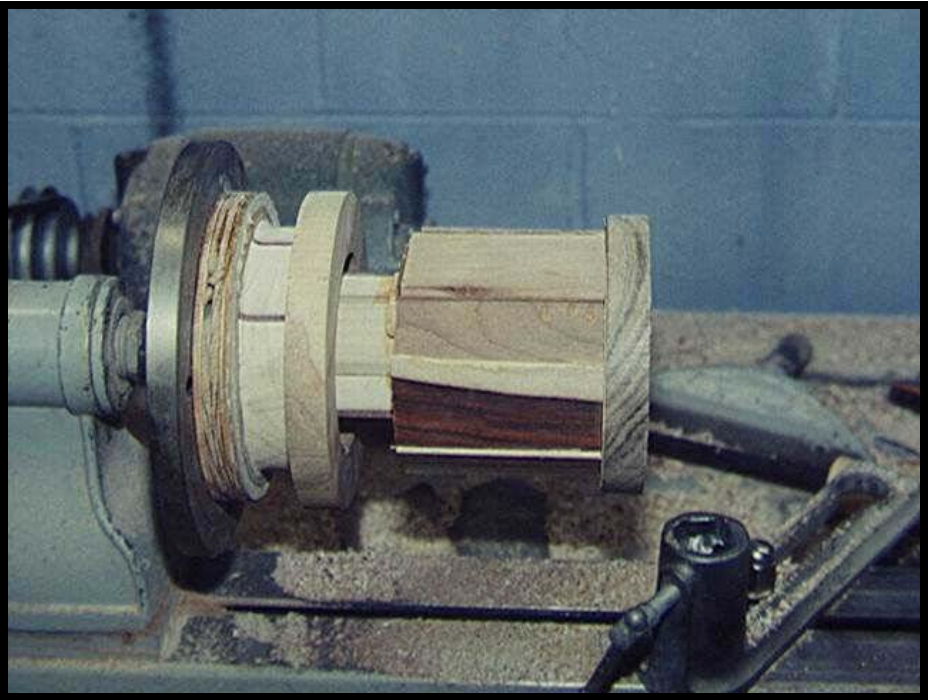
The laminated body and segmented base



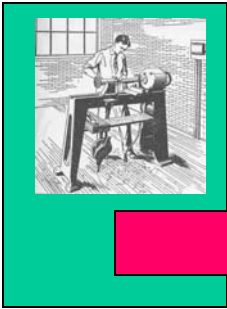
Segmented Turning



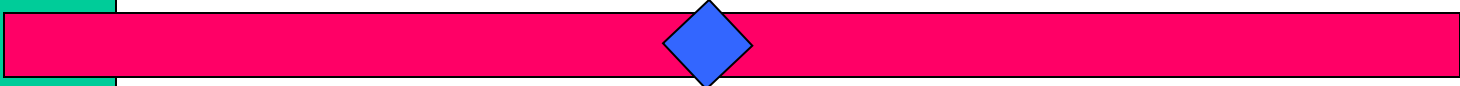
8-Plane Laminated lay-up



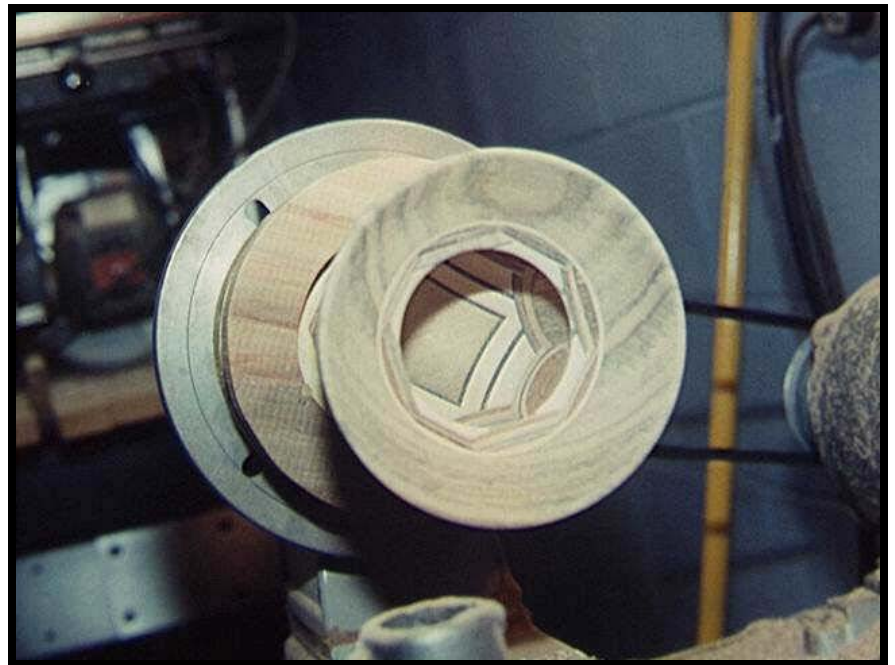
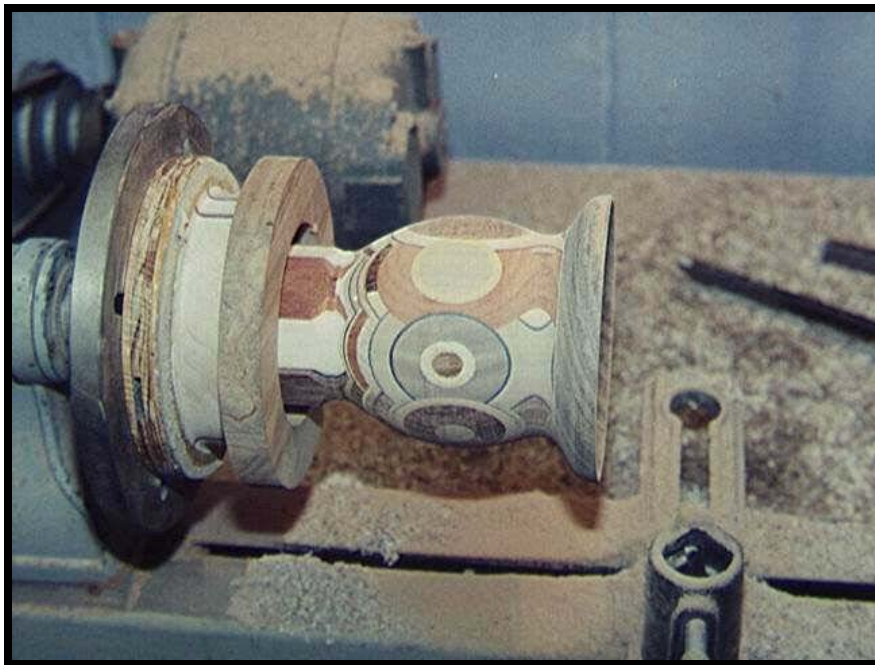
Turning begins



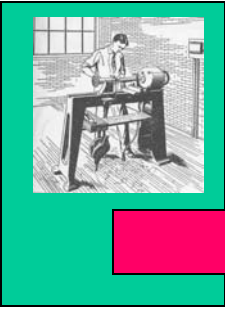
Segmented Turning



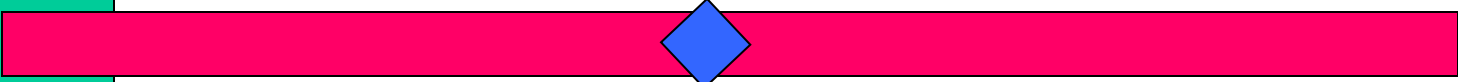
8-Plane Laminated lay-up



Turning progresses



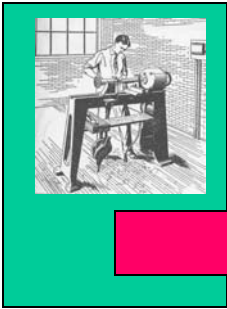
Segmented Turning



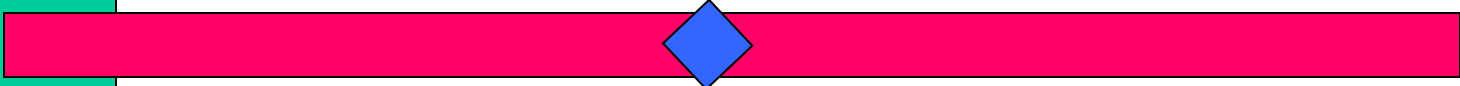
8-Plane Laminated lay-up



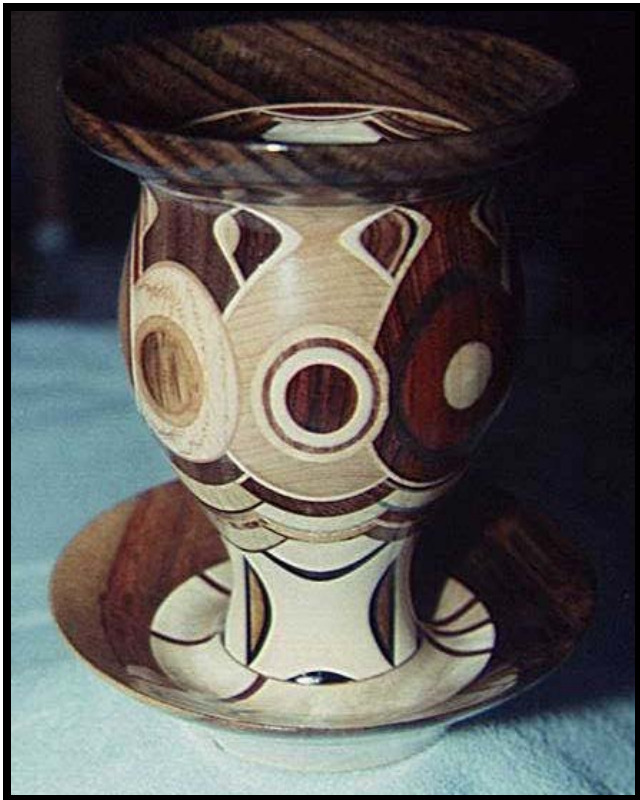
Turning nearly complete



Segmented Turning



8-Plane Laminated lay-up



The final product